

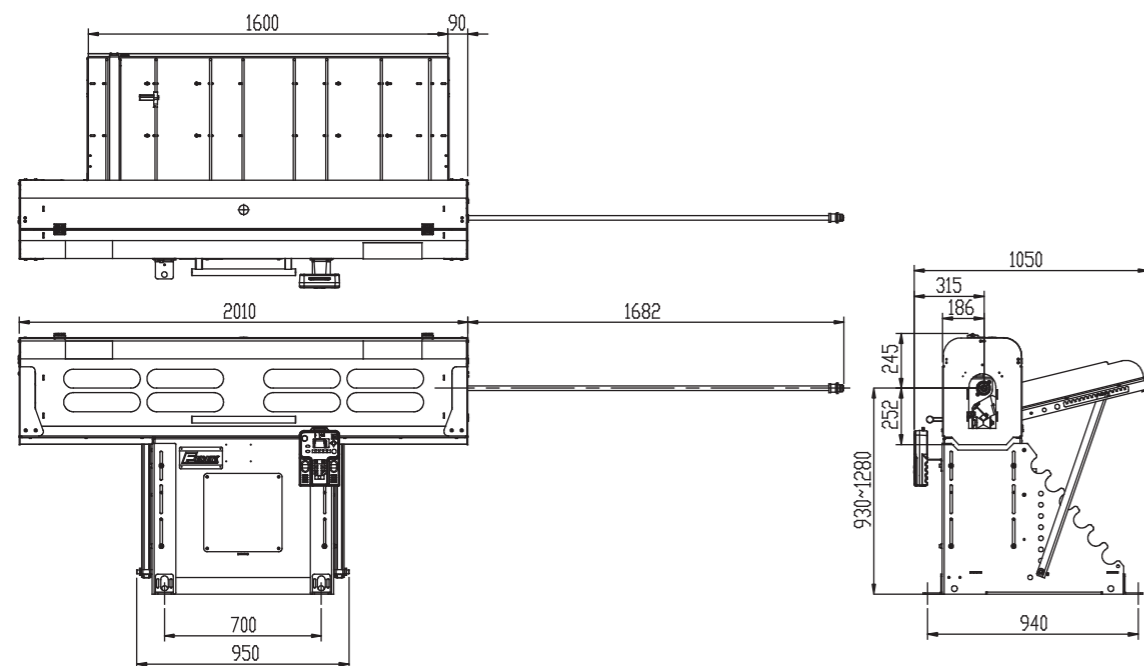
TECHNICAL SPECIFICATIONS 技術規格

SL80 S		
Diameter 直徑	mm	Ø 6 – Ø 80
Magazine Capacity 棒材容量		* Ø 10 mm x 65 pcs
Overall Length 機台長度	mm	2010
Overall Width 機台寬度	mm	940
Max. Bar Length 最長棒材長度	mm	** 1600
Weight 重量	kg	360
Air Pressure 空壓	kg/cm <sup>2</sup>	5 ~ 7
Power Supply 電源供應		220V 3p ( Varying power supply is available depending on applications 視應用條件，可選配不同電源供應 )
Spindle Height 主軸高度	mm	930 ~ 1280
Headstock Type 車床型式		Fixed 走刀式
Options 選配		
X/Z-axis Retraction System - Stroke 600 mm X/Z軸移動裝置 - 行程600 mm		

\* The magazine capacity is determined by bar diameter and program setting, please consult with LNS technical personnel.  
可用棒材容量與棒材直徑、出機設定有關，請向LNS技術人員諮詢。

\*\* Bar stock length should not exceed the spindle length.  
實際使用之棒材長度以不超過車床主軸長度為原則。

FLOOR PLAN 外部尺寸 (mm)



This product is completed operation and product liability insured.  
本產品已投保瑞士法郎100萬 ( 約新台幣3200萬 ) 產品責任險，請安心使用。

Design and specifications are subject to change without prior notice.  
本公司不斷研究創新，設計規格如變更恕不另行通知。



LNS Taiwan Co., Ltd. 台灣艾恩司股份有限公司  
No. 133, Ln. 418, Sec. 3, Xinan Rd., Wuri Dist.,  
Taichung City 414022, Taiwan (R.O.C.)  
414022 台灣台中市烏日區溪南路三段418巷133號  
TEL: +886-4-2335-4920 sales@LNS-asia.com  
FAX: +886-4-2335-2056 www.LNS-asia.com

Subject to modifications SL80 S / TCN8EN / 1220

## SL80 S

### SHORT AUTOMATIC BAR FEEDER

Diameter Range 棒材適用直徑：Ø 6 – Ø 80 mm



YOUR ONE-STOP-SHOP  
FOR MACHINE-TOOL PERIPHERALS





### User-Friendly Remote Control

Hand held remote control combined with HMI ensures interaction between the bar feeder and the lathe for easy setup and operation. It displays alarm messages and position tracking for quick changeovers and troubleshooting. Easy parameter setting achieves optimal operation.

#### 人性化的手持式控制器

手持式人機介面控制器，確保送料機與車床之間連接順暢，設定簡單操作容易；異常訊息顯示與定位追蹤功能使得換料迅速並幫助異常排除。參數簡易設定達到最佳操作。

### Linear Actuator

The high quality linear actuator offers precise and quiet operation. All motions are controlled and monitored by the PLC which works with high reliability.

#### 線性致動器

高品質的線性致動器提供精確且安靜的作動。PLC監控所有作動並提供高準確度與可靠度。

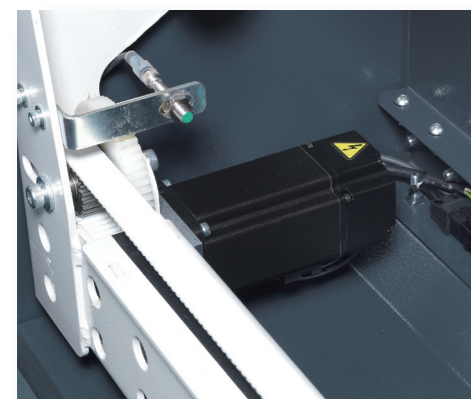


### Servo Drive

Advanced servo drive technology provides accurate bar control that is unrivalled on the market. It guarantees accurate bar control and prevents them from hitting the turret. This is called "soft touch" positioning.

#### 伺服驅動

先進的伺服驅動提供無與倫比的棒材控制，保證精確控制棒材的位置且預防棒材碰撞刀塔，即所謂「柔性」定位控制。



### "Easy Click" Pushing System

We offer 3 pushers to cover the whole range of bar diameters. The "easy click" system makes pusher changing easily and quickly, without any tools.

#### 快拆式壓棒

我們提供三種壓棒尺寸，適用於所有壓棒直徑範圍；藉由快拆機構可迅速簡易更換壓棒，不須使用任何工具。

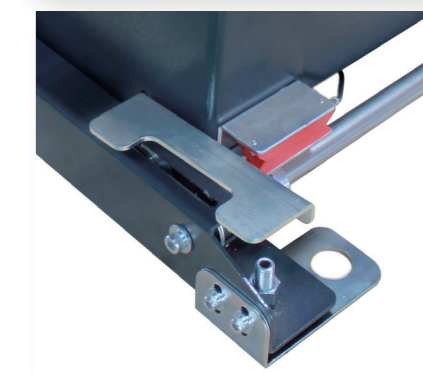
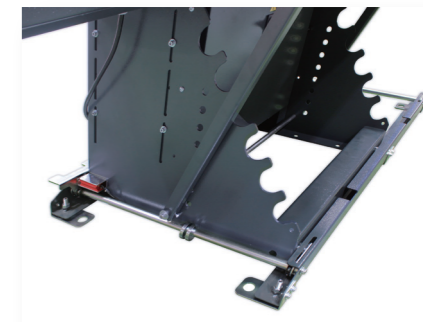


### Retraction System - Option

Z or X axis retraction system can be installed as an option. It provides easy access to the lathe for spindle liner changeover and machine maintenance. Retraction safety switches (option) is designed for maximum safety.

#### 移動式腳座 - 選配

Z軸或X軸移動式腳座可視需要選配，可使料機在Z軸或X軸方向移動，並提供使用者更換車床主軸襯套及機器維護之便利性。移動式腳座安全開關提供最佳安全性。



### Fast Changeover

Extremely short bar change cycle time, minimizes nonproductive time. Complete changeover from one diameter to another quickly and simply.

#### 快速換料

換料循環時間極短，大量節省時間。更換棒材直徑快速簡單。

