

Sales and Services

INDIA

NORTH		
Delhi T: +91 11 49849380 E: mmtdel@acemicromatic.com Gurgaon T: +91 124 4745500 E: mmtgur@acemicromatic.com Rohtak T: +91 98188 73444 E: mmtrksales@acemicromatic.com	Faridabad T: +91 129 4047000 E: mmtfbd@acemicromatic.com Ludhiana T: +91 161 5018296 E: mmtplib@acemicromatic.com	Rudrapur T: +91 97201 06532 E: mmtukd@acemicromatic.com Chandigarh T: +91 99141 91057 E: mmtchdsales@acemicromatic.com
EAST		
Jamshedpur T: +91 657 2383750 E: mmtjam@acemicromatic.com	Kolkata T: +91 98301 10933 E: mmtcal@acemicromatic.com	
WEST		
Ahmedabad T: +91 99242 89892 E: mmtahm@acemicromatic.com Aurangabad T: +91 240 2552309 E: mmtaur@acemicromatic.com Indore T: +91 73899 39190 E: mmtindr@acemicromatic.com Nasik T: +91 22 26861976 E: mmtbom@acemicromatic.com	Pune - Chakan T: +91 98906 23205 E: mmtpune@acemicromatic.com Pune - Chinchwad T: +91 20 40712111 E: mmtpune@acemicromatic.com Kolhapur T: +91 98906 23202 E: mmtkop@acemicromatic.com Mumbai T: +91 22 26867271 E: mmtbom@acemicromatic.com	Mumbai - Thane T: +91 22 25829062 E: mmtbom@acemicromatic.com Rajkot T: +91 28272 87003 E: mmtraj@acemicromatic.com
SOUTH		
Bangalore - Peenya T: +91 80 40200555 E: mmtblr@acemicromatic.com Bangalore - Bommasandra T: +91 80 27834836 E: mmtbms@acemicromatic.com Belgaum T: +91 99800 02597 E: mmtbgm@acemicromatic.com Chennai - Ambattur T: +91 44 26178001 / 03 E: mmtche@acemicromatic.com	Chennai - Sriperumbudur T: +91 44 26178001 / 03 E: mmtche@acemicromatic.com Chennai - Tambaram T: +91 98407 85523 E: mmttbm@acemicromatic.com Coimbatore T: +91 422 4506183 E: mmtcbe@acemicromatic.com Hyderabad T: +91 40 23070496 E: mmthyd@acemicromatic.com	Ranipet T: +91 98407 85521 E: mmtrpt@acemicromatic.com Trichy T: +91 98432 65434 E: mmtry@acemicromatic.com

INTERNATIONAL

Germany T: +49 15774543744 E: vinayb@acemicromatic.com	China (Shanghai) T: +86 (21) 5866 5031 / 32 E: raguramachandranc@acemicromatic.com
---	---

Manufactured by:



Ace Designers Ltd.

Plot No 7 & 8, II Phase, Peenya Industrial Area, Bengaluru - 560 058, INDIA
 Tel : +91-80-2218 6700, Fax : +91-80-2218 6723,
 Email : info@acedesigners.co.in
 www.acedesigners.com



Follow us on:



MKD/ JULY-2020 /REV.04



www.acedesigners.com



CNC SLIDING HEADSTOCK AUTOMATS

High productivity at great precision

THINK Turning®
 Ace Designers

CNC Sliding Headstock Automats

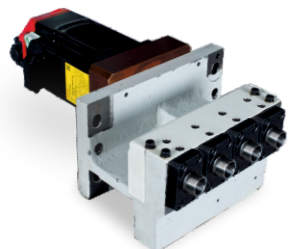
The CNC Sliding Headstock Automat machine is of twin spindle sliding head design to bring in productivity of Swiss style automat. The machine elements such as ball screws, bearings, CNC system and drives have been chosen from the best available technology in the world. The machine is built by a dedicated, experienced and skilled team under the guidance of domain experts.

SHA Application Examples

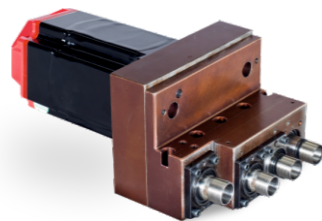




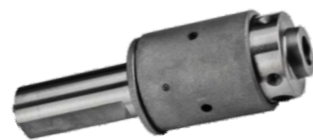
Accessories



Back rotary tool device



4 Rotary tool device



Broaching



Radial Adjustable plugin ($\pm 90^\circ$)



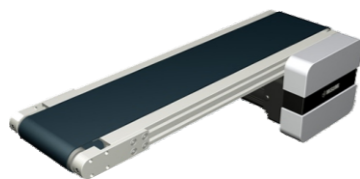
Radial Set Back



Thread Whirling



Mist collector



Work piece conveyor



Long work piece ejection system



Chip Conveyor



Chiller Unit



Air Compressor with Dryer

SHA 12



Machine Features

- Powerful built in motor for main & sub spindle.
- High speed spindle, range upto 12000 rpm.
- Suitable for small part machining with 5 axes capability.
- Collet holding system with synchronous revolving guide bush, fixed guide bush & without guide bush options.
- Houses 20 tools including 3 rotary tools.
- Simultaneous machining on both main & sub spindle to increase productivity.
- Continuous run with bar feeder from $\phi 3\text{mm}$ to $\phi 12\text{mm}$.

Standard Accessories

- Main spindle chucking device
- Sub spindle chucking device
- Oil cooling unit for both the spindle
- Rotary tool driving device to accommodate 3 live tools
- Normal pressure coolant system
- Centralised lubrication system (with level detector)
- Pneumatic device for rotary tool air sealing
- Knock device for component ejection and for collection
- Built in lighting system
- Synchronous rotating guidebush device
- Workpiece collecting box

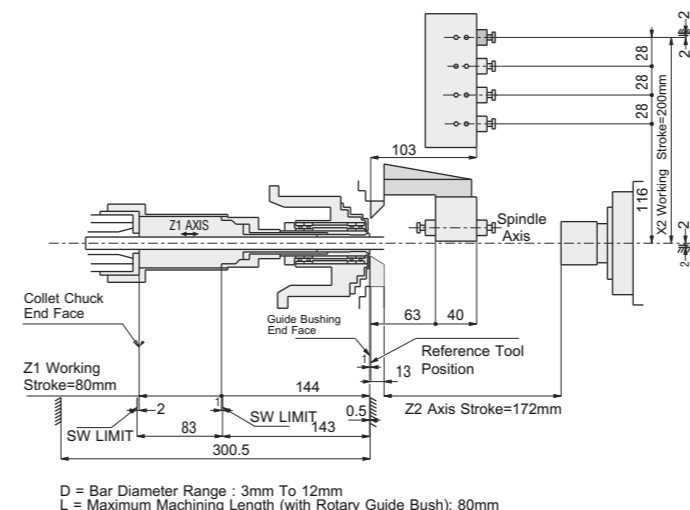
Optional Accessories

- Bar feeder
- Chip conveyor with tilting bin
- Mist collector system

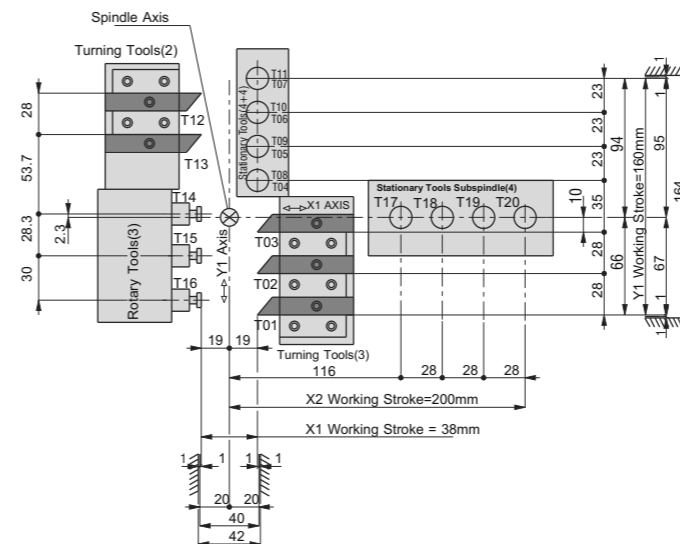
Control System Details

- 10.4" color LCD
- 2 path control
- Simultaneously controlled 4 axes
- PMC Axis control
- Tool nose radius compensation
- Tool life management
- Self-diagnostics
- Part program storage size 1MB
- No. of registerable programs 800
- Absolute/incremental programming
- Diameter/radius programming (X axis)
- Custom macro
- Multiple repetitive cycles
- Thread/Synchronous cutting
- Rigid tapping
- Direct drawing dimension programming
- Inch/metric switchable
- Graphic display
- Clock function
- Multi-language display
- Alarm/operation history display
- Unexpected disturbance torque detection function

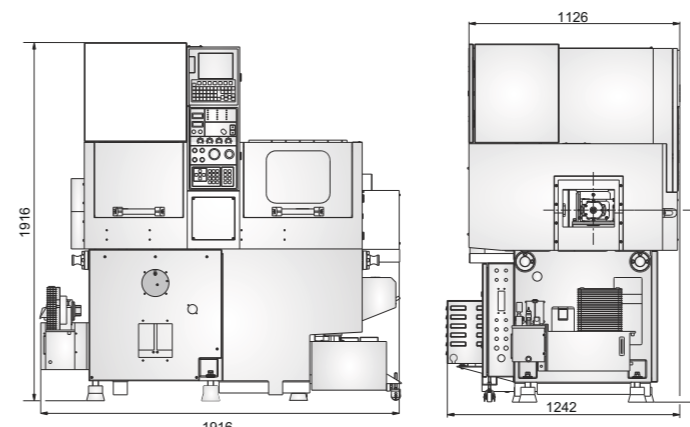
Machining Range



Interference Diagram



Overall Views



All dimensions are in mm

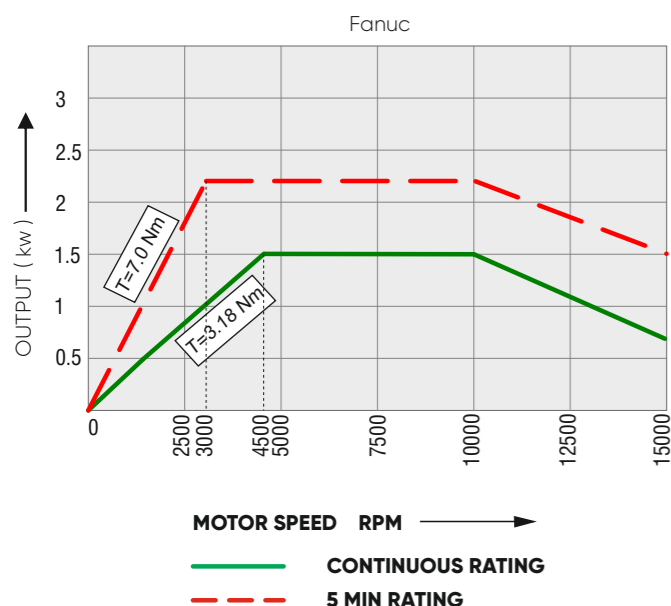
Specifications

SHA 12

Control System	Fanuc
Machining Capacity	
Max. machining diameter (D)	03-12 mm
Max. machining length (L) with rotary guide bush	80 mm
Max. machining length (L) with fixed guide bush	210 mm
Max. machining length (L) without guide bush	2D
Max. front drilling diameter - Main Spindle	7 mm
Max. front tapping diameter (tap, die)-Main spindle	M6x1
Maximum chuck diameter of Sub spindle	12 mm
Max. Drilling diameter in back machining	7 mm
Max. Tapping in back machining	M6x1
Max. Drilling diameter of cross rotary tool	6 mm
Max. Tapping of cross rotary tool	M5x0.8
Machining Capability	
Max Main spindle speed	12000 RPM
Max. Sub Spindle Speed	12000 RPM
Max Spindle speed of cross rotary tool	6000 RPM
Max. No. of tools that can be mounted	20
Turning tools on the gang tool post	5(3+2)
Number of cross rotary tools	3
Tools for front drilling	4
Tools for back drilling	8(4+4)
Tool size (turning tool shank)	12 mm
Sleeve size (tool holder)	Ø20 mm
Rapid feed rate Z1, Z2, X2	32 m/min.
Rapid feed rate X1, Y1	24 m/min.
Motors	
Main Spindle - cont./5min	1.5 / 2.2 kW
Back Spindle - cont./5min	1.5 / 2.2 kW
Cross rotary tool	0.75 kW
Z1, Z2, X1, X2,	0.5 kW
Y1 (Vertical Axis)	0.75 kW
Coolant Pump Unit	0.2 kW
Lubrication Pump Unit	0.09 kW
Collet	
Main spindle collet chuck	SF 20/201
Sub spindle collet chuck	SF 20/201
Rotary tool collet chuck	ER 16, ER 11
Chuck for drill sleeves	ER 11
Guide bushing	R 24/03
General Information	
Coolant Capacity	115 litres
Spindle Center Height	1000 mm
Air pressure	6 Bar
Overall Machine Dimension (L x W x H)	1242 X 1916 X 1916 mm
Overall Weight (Without Packing) (Approx)	~ 1950 kg

Note:
Owing to continuous up-gradation of our products, the specification may change and to be reconfirmed at the time of ordering.

Power Torque Diagram

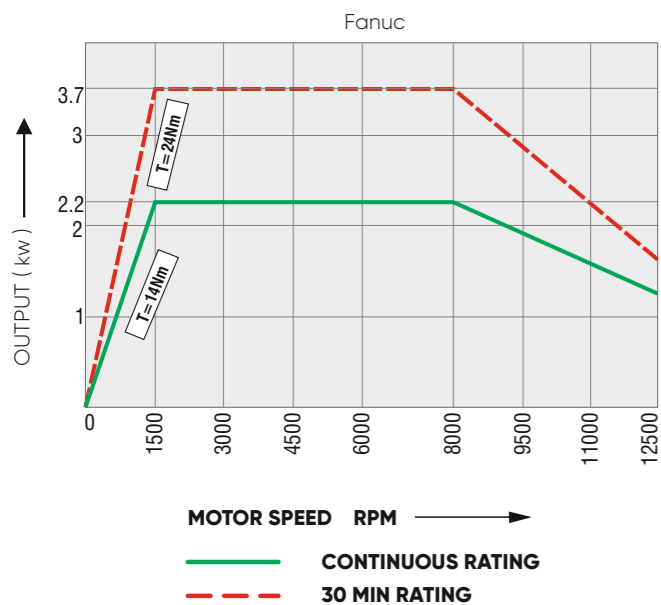


SHA 20



FIE FOUNDATION AWARD
IMTEX-2013

Power Torque Diagram



Machine Features

- Rigid symmetric bed design.
- Powerful built in motor for main and sub spindle.
- Spindle speed up to 8000 rpm
- 5 Axes capability.
- Suitable for small parts machining
- Collet holding system with synchronous revolving guide bush system.
- Houses 21 tools including 3 rotary tools.
- Continuous run with bar feeder from Dia 3 to dia 20mm.

Standard Accessories

- Main Spindle Chucking Device
- Sub Spindle Chucking Device
- Headstock Cooling Device
- Rotary Tool Driving Device to accommodate 3 live tools
- Normal Pressure Coolant System
- Centralised Lubrication System (with level detector)
- Door Switch
- Pneumatic device for air sealing
- Knockout device for component ejection
- Built-in Lighting system
- Synchronous rotating guide bush device
- Work piece collecting chute and work piece collecting box

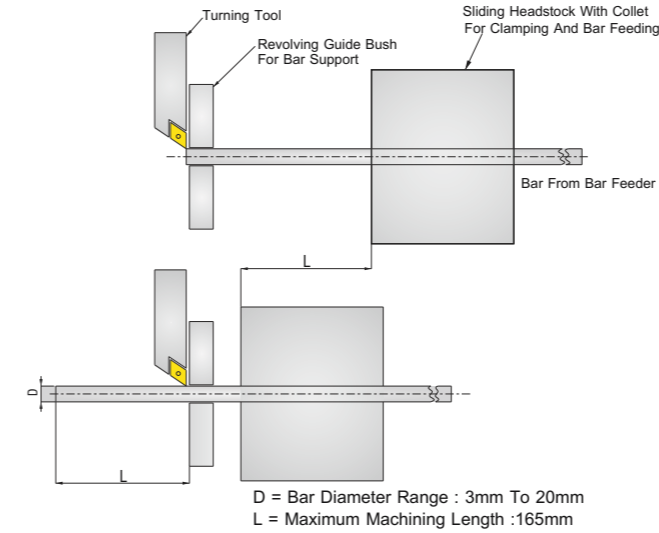
Optional Accessories

- Barfeeder
- Work piece Conveyor
- Chip Conveyor with Tilting Bin
- Medium pressure cooling system
- Long work piece ejection system
- 4 rotary tool device
- Back rotary tool device
- Mist collector system.
- Chiller unit

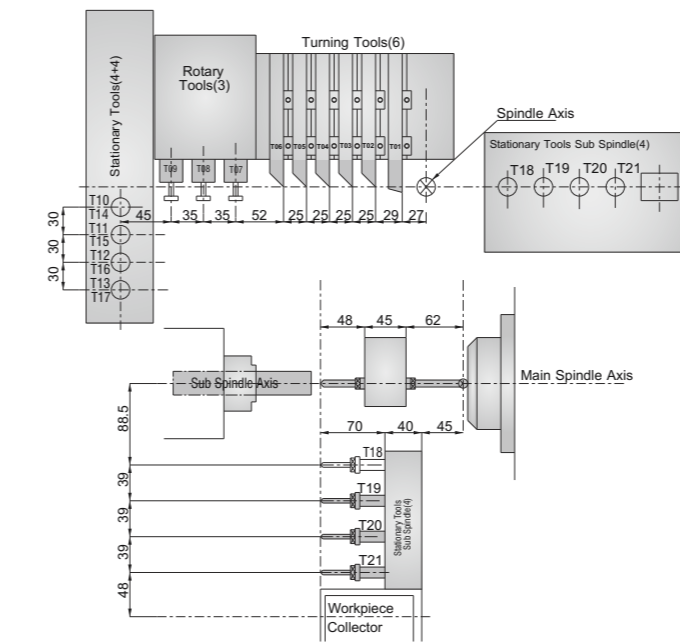
Control System Details

- 10.4" color LCD
- 2 path control
- Simultaneously controlled 4 axes
- PMC Axis control
- Tool nose radius compensation
- Tool life management
- Self-diagnostics
- Part program storage size 1MB
- No. of registerable programs 800
- Absolute/incremental programming
- Diameter/radius programming (X axis)
- Custom macro
- Multiple repetitive cycles
- Thread/Synchronous cutting
- Rigid tapping
- Direct drawing dimension programming
- Inch/metric switchable
- Graphic display
- Clock function
- Multi-language display
- Alarm/operation history display
- Unexpected disturbance torque detection function

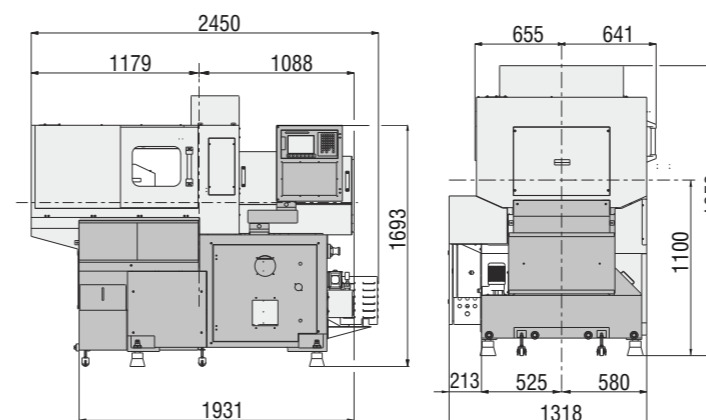
Machining Range



Interference Diagram



Overall Views



All dimensions are in mm

Specifications

	SHA 20
Control System	Fanuc
Machining Capacity	
Max. machining diameter (D)	20 mm
Max. machining length (L) Front Ejection	100 mm
Max. front drilling diameter	10 mm
Max. front tapping diameter (tap, die)	M8
Maximum chuck diameter of sub spindle	20 mm
Spindle through-hole diameter	24 mm
Max. drilling diameter in back machining process	8 mm
Max. tapping diameter in back machining process	M6
Max. drilling diameter of gang rotary tool	7 mm
Max. tapping diameter of gang rotary tool	M6
Machining Capability	
Max main spindle speed	8000 rpm
Max sub spindle speed	8000 rpm
Max. spindle speed of gang rotary tool	6000 rpm
Max. No. of tools that can be mounted	21
Turning tools on the gang tool post	6
Cross rotary tools	3
Tools for front drilling	4
Tools for back drilling	8 (4+4)
Tool size (gang tool post)	square 1/2", (12 x 12mm)
X1 axis (Rapid Traverse)	18m/min
X2, Y1, Z1, Z2 axes (Rapid Traverse)	32m/min
Motors	
Main Spindle - cont / 30 min	2.2 / 3.7 kW
Sub Spindle - cont / 30 min	2.2 / 3.7 kW
Cross Rotary tool	0.75 kW
Axes (X1,Z1,Y1,X2,Z2)	0.75 kW
Coolant Pump - Normal pressure	0.2kW
Coolant Pump - Medium pressure	0.75 kW
Lubrication Pump Unit	0.09kW
Collet	
Main spindle collet chuck	SF 25/64
Sub spindle collet chuck	SF 25/64
Rotary tool collet chuck	ER 16
Chuck for drill sleeves	ER 16
Guide bushing	R 28/04
General Information	
Coolant Capacity	150 Litres
Spindle Center Height (with pads)	1100 mm
Air pressure	6 bar
Overall Machine Dimensions (L x W x H)	2450 x 1379 x 1850 mm
Overall Weight (Without Packing) (Approx)	-2950 kg

Note:
Owing to continuous up-gradation of our products, the specification may change and to be reconfirmed at the time of ordering.

SHA 20/3



Machine Features

- Powerful built in motor for main spindle.
- High speed spindle, range upto 10000 rpm.
- Suitable for small part machining with 3 axes capability.
- Collet holding system with synchronous revolving guide bush & without guide bush options.
- Houses 12 tools including 3 rotary tools.
- Continuous run with bar feeder from $\phi 3\text{mm}$ to $\phi 20\text{mm}$.

Standard Accessories

- Main Spindle Chucking Device
- Headstock Cooling Device
- Rotary Tool Driving Device to accommodate 3 live tools
- Normal Pressure Coolant System
- Centralised Lubrication System (with level detector)
- Door Switch
- Pneumatic device for air sealing
- Built-in Lighting system
- Synchronous rotating guide bush device
- Work piece collecting chute and work piece collecting box
- Guide bushless kit

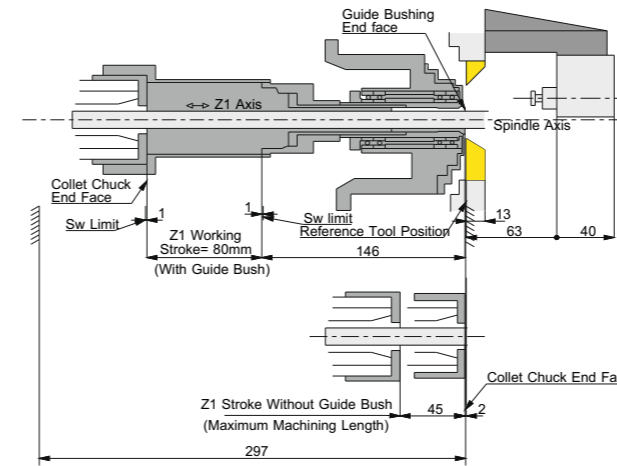
Optional Accessories

- Barfeeder
- Chip Conveyor with Tilting Bin
- Medium pressure cooling system
- 4 rotary tool device
- Mist collector system.

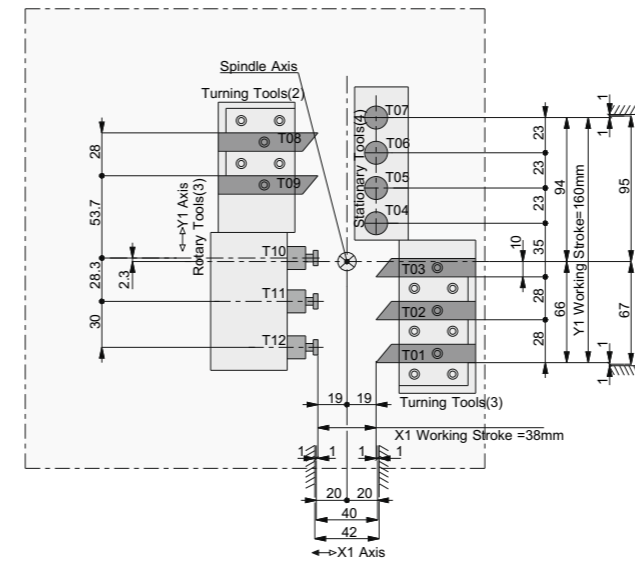
Control System Details

- 10.4" color LCD
- 1 path control
- Simultaneously controlled 4 axes
- PMC Axis control
- Tool nose radius compensation
- Tool life management
- Self-diagnostics
- Part program storage size 512 KB
- No. of registerable programs 400
- Absolute/incremental programming
- Diameter/radius programming (X axis)
- Custom macro
- Multiple repetitive cycles
- Thread/Synchronous cutting
- Rigid tapping
- Direct drawing dimension programming
- Inch/metric switchable
- Graphic display
- Clock function
- Multi-language display
- Alarm/operation history display
- Unexpected disturbance torque detection function

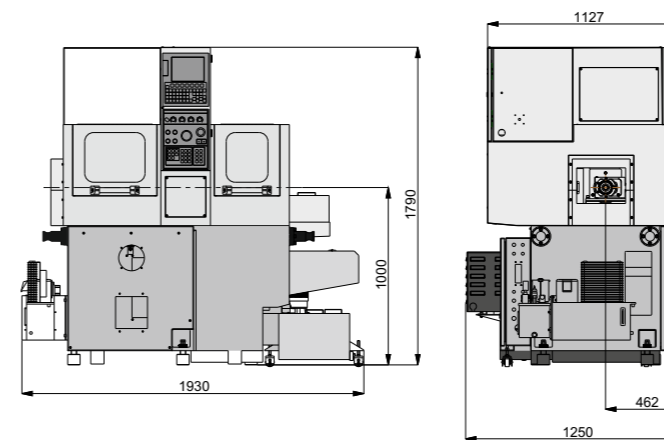
Machining Range



Interference Diagram



Overall Views



All dimensions are in mm

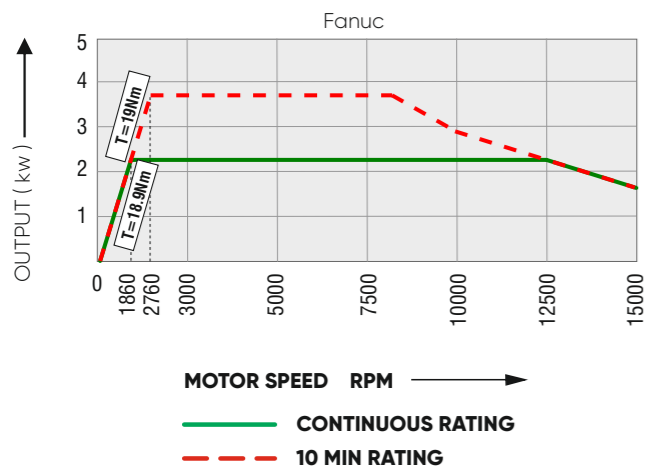
Specifications

SHA 20/3

Control System	Fanuc
Machining Capacity	
Max. machining diameter (D)	20mm
Max. machining length (L) with rotary guide bush	80mm
Maximum machining Length with out guide bush	2D
Max. front drilling diameter	10mm
Max. front tapping diameter - main spindle	M10
Max. drilling diameter of cross rotary tool	6mm
Max. tapping diameter of cross rotary tool	M5 x 0.8
Max. Tool spindle slotting cutter diameter	$\phi 30\text{mm}$
Machining Capability	
Max main spindle speed	10000rpm
Max main spindle speed with rotary guide bush	8000rpm
Max. spindle speed of cross rotary tool	6000rpm
Max. No. of tools that can be mounted	12
Turning tools on the gang tool post	5(3+2)
Number of Cross rotary tools	3(4 option)
Tools for front drilling	4
Tool size (turning tool shank)	12mm X 12mm
Sleeve size (tool holder)	$\phi 20\text{mm}$
Rapid feed rate Z1	32 m/min
Rapid feed rate X1, Y1	24 m/min
Motors	
Main Spindle - cont / 10 min	2.2 / 3.7kW
Cross rotary tool	0.75 kW
Z1, X1	0.5 kW
Y1 (Vertical Axis)	0.75 kW
Coolant Pump - Medium pressure	0.54 kW
Lubrication Pump Unit	0.09 kW
Collet	
Main spindle collet chuck	SF 25/64
Rotary tool collet chuck	ER 16
Chuck for drill sleeves	ER 16
Guide bushing	R 28 / 04
General Information	
Coolant Capacity	115 litres
Spindle Center Height (with pads)	1000mm
Air pressure	6 Bar
Overall Machine Dimensions (L x W x H)	1930 x 1250 x 1790 mm
Overall Weight (Without Packing)	1500 kg

Note:
Owing to continuous up-gradation of our products, the specification may change and to be reconfirmed at the time of ordering.

Power Torque Diagram



SHA 20 Optima



Machine Features

- Rigid FEA optimized bed design
- Powerful built in motor for main & sub spindle; Oil cooled Headstock
- Motorized modular direct drive rotary guide bush(GB)
- Spindle speed up to 8000 rpm
- 5 Axes capability
- Suitable for small & medium parts machining
- Collet holding system with RGB or without Guide bush option
- Houses 27 tools including 4 rotary tools
- Simultaneous machining on both main & sub spindle to increase productivity
- Continuous run with servo bar feeder from \varnothing 5 to \varnothing 32mm

Standard Accessories

- Main spindle chucking device
- Sub spindle chucking device
- Oil cooling unit for both the spindle
- Rotary tool driving device to accommodate 4 live tools
- Normal pressure coolant system
- Centralised lubrication system (with level detector)
- Pneumatic device for rotary tool air sealing
- Knock device for component ejection and for collection
- Built in lighting system
- Guide bushless kit
- Workpiece collecting box

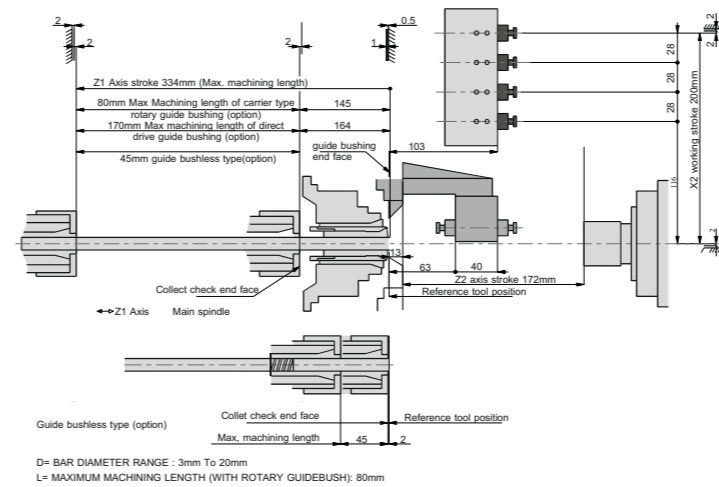
Optional Accessories

- Bar feeder
- Chip conveyor with tilting bin
- Direct drive rotary guidebush
- Carrier type guide bush
- High pressure coolant system
- Mist collector system

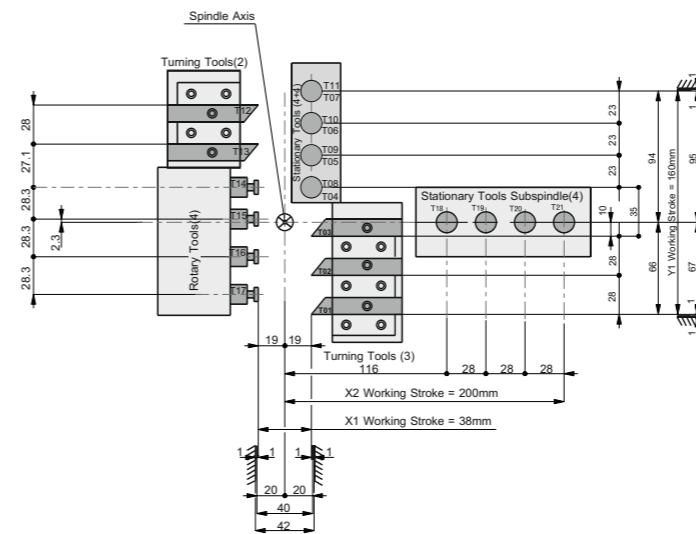
Control System Details

- 10.4" color LCD
- 2 path control
- Simultaneously controlled 4 axes
- PMC Axis control
- Tool nose radius compensation
- Tool life management
- Self-diagnostics
- Part program storage size 1MB
- No. of registerable programs 800
- Absolute/incremental programming
- Diameter/radius programming (X axis)
- Custom macro
- Multiple repetitive cycles
- Thread/Synchronous cutting
- Rigid tapping
- Direct drawing dimension programming
- Inch/metric switchable
- Graphic display
- Clock function
- Multi-language display
- Alarm/operation history display
- Unexpected disturbance torque detection function

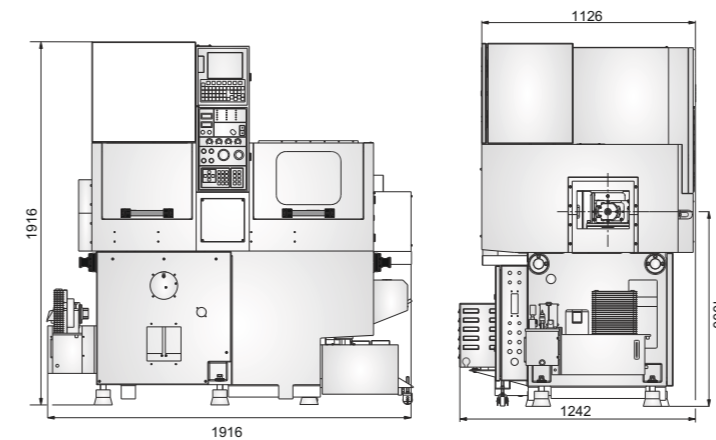
Machining Range



Interference Diagram



Overall Views



All dimensions are in mm

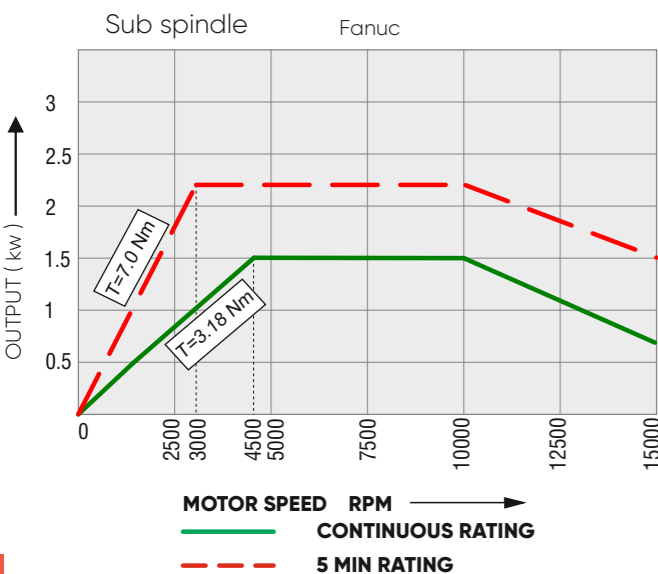
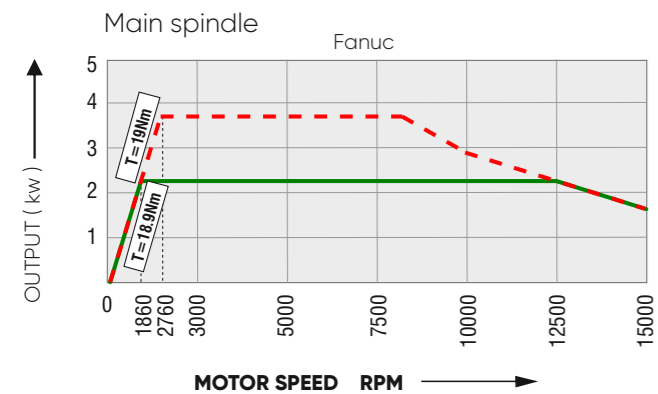
Specifications

SHA 20 Optima

Control System	Fanuc
Machining Capacity	
Max. machining diameter (D)	20 mm
Max. machining length (L) without guide bush	2D
Max. machining length (L) with carrier type guide bush	80 mm
Max. machining length (L) with direct drive guide bush	170 mm
Max. front drilling diameter - Main Spindle	10 mm
Max. front tapping diameter (tap, die)-Main spindle	M10
Maximum chuck diameter of Sub spindle	\varnothing 20 mm
Max. Drilling diameter in back machining	\varnothing 8 mm
Max. Tapping in back machining	M8
Max. Drilling diameter of cross rotary tool	6 mm
Max. Tapping of cross rotary tool	M5x0.8
Max. Slotting cutting dia	30mm
Machining Capability	
Max Main spindle speed	10000 RPM
Max. Sub Spindle Speed	12000 RPM
Max Spindle speed of cross rotary tool	6000 RPM
Max. No. of tools that can be mounted	21
Turning tools on the gang tool post	5(3+2)
Number of cross rotary tools	4
Tools for front drilling	4
Tools for back drilling	8(4+4)
Tool size (turning tool shank)	12 mm
Sleeve size (tool holder)	\varnothing 20 mm
Rapid feed rate Z1,Z2,X2	32 m/min.
Rapid feed rate X1,Y1	24 m/min.
Motors	
Main Spindle - cont./10min	2.2 / 3.7 kW
Back Spindle - cont./5min	1.5 / 2.2 kW
Cross rotary tool	0.75 kW
Z1,Z2,X1,X2,	0.5 kW
Y1 (Vertical Axis)	0.75 kW
Coolant Pump Unit	0.2 kW
Lubrication Pump Unit	0.09 kW
Collet	
Main spindle collet chuck	SF25/64
Sub spindle collet chuck	SF25/64
Rotary tool collet chuck	ER16, ER11
Chuck for drill sleeves	ER11
Guide bushing	CGB R28/04, DDGB R26/02
General Information	
Coolant Capacity	115 litres
Spindle Center Height	1000 mm
Air pressure	6 Bar
Overall Machine Dimension (L x W x H)	1242 X 1916 X 1916 mm
Overall Weight (Without Packing) (Approx)	~ 2000 kg

Note:
Owing to continuous up-gradation of our products, the specification may change and to be reconfirmed at the time of ordering.

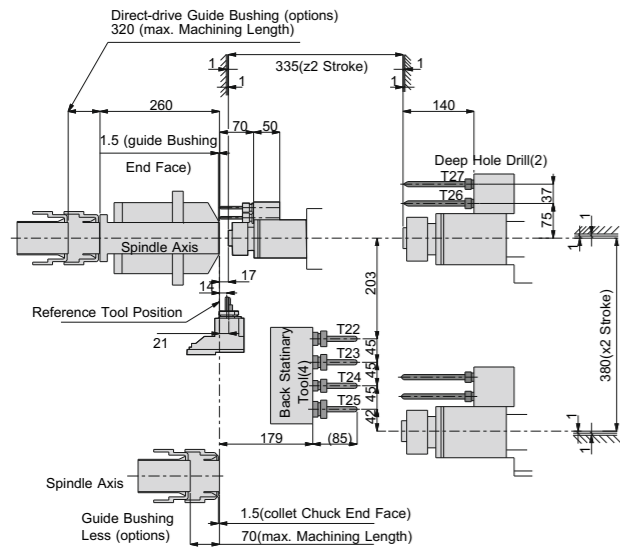
Power Torque Diagram



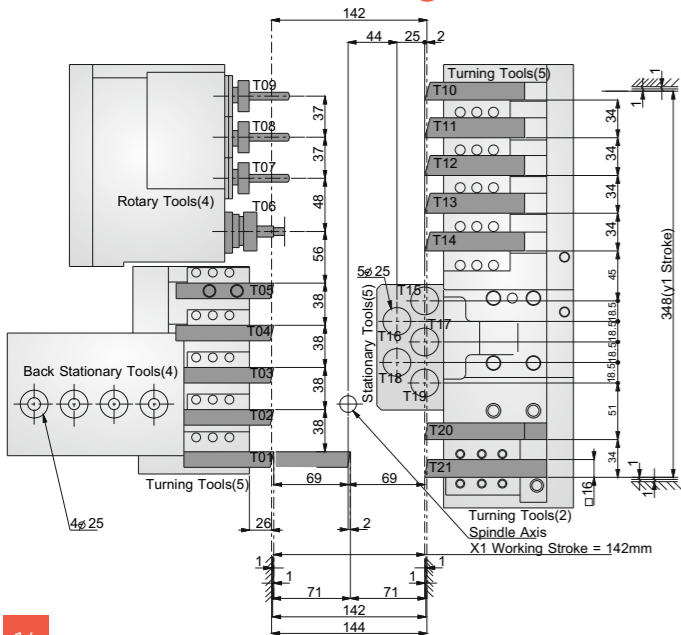
SHA 32



Machining Range (SHA 32/5)



Interference Diagram (SHA 32/5)



Machine Features

- Rigid FEA optimized bed design
- Powerful built-in motor for main & sub spindle; Oil cooled Headstock
- Motorized modular direct drive rotary guide bush(RGB)
- Spindle speed up to 8000 rpm
- 5 Axes capability
- Suitable for small & medium parts machining
- Collet holding system with RGB or without Guide bush option
- Houses 27 tools including 4 rotary tools
- Simultaneous machining on both main & sub spindle to increase productivity
- Continuous run with servo bar feeder from $\varnothing 5$ to $\varnothing 32$ mm

Standard Accessories

- Main spindle chucking device
- Sub spindle chucking device
- Oil cooling unit for both the spindle and Direct drive rotary guide bush
- Rotary tool device to accommodate 4 live tools
- Normal pressure coolant system
- Centralized lubrication system with level detector
- Built in Lightning system
- Work piece Conveyer
- Deep hole drill
- Knock out Device for Component Ejection & for collection
- Pneumatic device air sealing system for Rotary tools & Rotary guide bush

Optional Accessories

- Bar feeder
- Chip conveyor with tilting bin
- High pressure cooling system
- Mist collector system
- Sub spindle driven rotary tool device
- 3 Plugin cross rotary tool in lieu of 5 turning tools

Control System Details

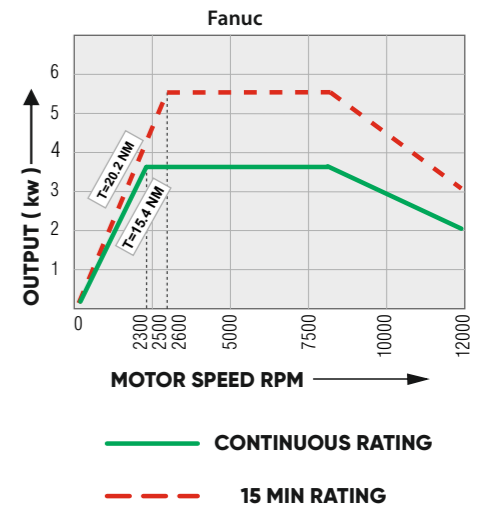
- 10.4" color LCD
- 2 path control
- Simultaneously controlled 4 axes
- PMC Axis control
- Tool nose radius compensation
- Tool life management
- Self-diagnostics
- Part program storage size 1MB
- No. of registerable programs 800
- Absolute/incremental programming
- Diameter/radius programming (X axis)
- Custom macro
- Multiple repetitive cycles
- Thread/Synchronous cutting
- Rigid tapping
- Direct drawing dimension programming
- Inch/metric switchable
- Graphic display
- Clock function
- Multi-language display
- Alarm/operation history display
- Unexpected disturbance torque detection function

Specifications

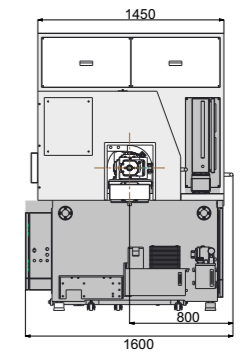
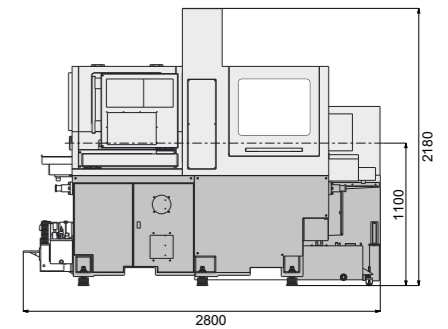
	SHA 32/5	SHA 32/6
Control System		
	Fanuc	Fanuc
Machining Capacity		
Max. machining diameter (D)	32 mm	32 mm
Max. machining length (L) with rotary guide bush	320 mm	320 mm
Max. machining length (L) without guide bush	2xD mm	2xD mm
Max. front drilling diameter - main spindle	12 mm	12 mm
Max. front tapping diameter (tap, die) (main spindle)	M 10	M 10
Maximum chuck diameter of sub spindle	32 mm	32 mm
Max. drilling diameter in back machining process	10 mm	10 mm
Max. tapping diameter in back machining process	M10	M10
Max. drilling diameter of cross rotary tool	8mm	8mm
Max. tapping diameter of cross rotary tool	M8	M8
Max. tool spindle slotting cutter dia	40 mm	40 mm
Machining Capability		
Max main spindle speed	8000 RPM	8000 RPM
Max sub spindle speed	8000 RPM	8000 RPM
Direct drive rotary guide bushing	8000 RPM	8000 RPM
Max. spindle speed of cross rotary tool	6000 RPM	6000 RPM
Max. No. of tools that can be mounted	27	31
Turning tools on the gang tool post	12	12
Cross rotary tools	4	4
Tools for front drilling	7	7
Tools for back drilling (Stationary)	4	4
Tool shank size (gang tool post)	□ 16mm	□ 16mm
Rotary tools on Y2 axis	-	4
X1, Y1 axes (Rapid Traverse)	24 m/min	24 m/min
X2, Z1, Z2 axes (Rapid Traverse)	30 m/min.	30 m/min.
Plugin cross rotary tool in lieu of 5 turning tools (Optional)	3	3
Motors		
Main Spindle - cont / 15 min	3.7 / 5.5 kW	3.7 / 5.5 kW
Sub Spindle - cont / 15 min	3.7 / 5.5 kW	3.7 / 5.5 kW
Cross Rotary Tool	1.2 kW	1.2 kW
Plugin Cross Rotary Tool (Optional)	1 kW	1 kW
Back Rotary Tool	-	1 kW
Axes X1, Y1, Z1, X2, Z2	1.2 kW	1.2 kW
Axis Y2	-	0.75 kW
Coolant Pump RKM 120 (Normal pressure)	1.1 kW	1.1 kW
Coolant Pump Nippon or equivalent (High pressure) (Optional)	1.5 kW	1.5 kW
Lubrication Pump Unit Cenlub	0.09	0.09
Collet		
Main spindle collet chuck	SF 37 / 740	SF 37 / 740
Sub spindle collet chuck	SF 37 / 740	SF 37 / 740
Rotary tool collet chuck	ER 16, ER 20	ER 16, ER 20
Chuck for drill sleeves	ER 16, ER 20	ER 16, ER 20
Guide bushing	R41 / 02	R41 / 02
General Information		
Coolant Capacity	200 litres	200 litres
Spindle Center Height (with pads)	1100 mm	1100 mm
Air pressure	6 Bar	6 Bar
Overall Machine Dimensions (L x W x H)	2800 X 1600 X 2180mm	2800 X 1600 X 2180mm
Overall Weight (Without Packing)	~ 3800 kg	~ 4000 kg

Note: Owing to continuous up-gradation of our products, the specification may change and to be reconfirmed at the time of ordering.

Power Torque Diagram



Overall Views



All dimensions are in mm